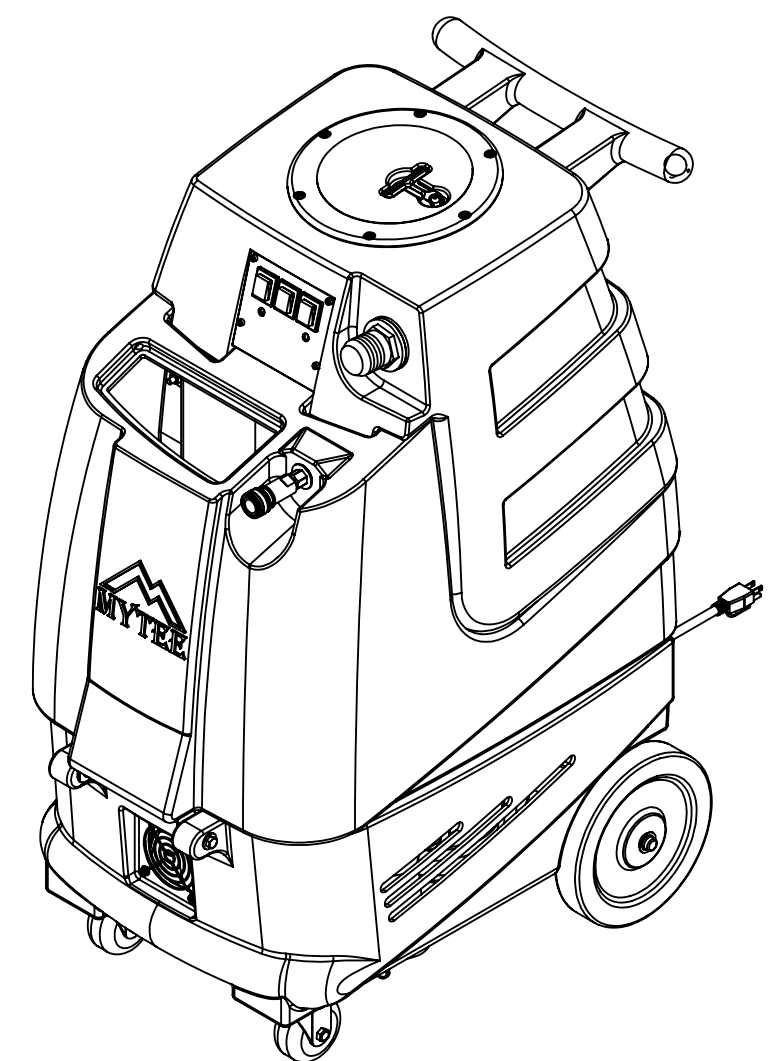


ITEM NO.	PART NO.	DESCRIPTION	QTY.
1	P756	base, firebird	1
2	H667	caster, 3", Black Hub, Gray Tread	2
3	H215	nut, hex, 1/4-20 s/s	16
4	H210	washer, 1/4" flat, s/s	20
5	H203	bolt, 1/4-20 x 1-1/4" hex head	10
6	H296	guard, cooling fan, wire	2
7	H343	screw, #10 x 5/8" hex head, zinc	8
8	C305	pump, 100psi, demand, 115V	1
9	B172	elbow, brass, 90 deg, 1/2" barb x 3/8"mpt	1
10	PH615-26	sol hose, 1/2" kuri, 100 psi	1
11	B160	adapter, brass, 1/2" barb x 3/8" fsw, ball end	1
12	H347	clamp, hose, 5/16-29/32	4
13	H222	screw, #10-32 x 1-1/4" phil pan head, zinc	4
14	H273	nut, kep, #10-32 zinc	4
15	B105	bushing, brass, 3/8"mpt x 1/4"	1
16	B136	elbow, brass, 90 deg, 1/4" mpt x 1/4" mpt	1
17	AH108S-25	sol hose, 1/4" x 24 1/2", (OAL)	1
18	H202	bolt, 1/4-20 x 3/4" hex head, s/s	6
19	H768	bolt, 1/4-20 x 3/4" serrated hex flange, zinc	7
20	H253	plate, dual manifold, 9" x 13"	1
21	H216	nut, lock, 1/4-20, nylon insert, s/s	6
22	H500	vac support, 2 stage, 3-1/8"	6
23	P735	manifold, single vac, no gasket	2
24	G004	gasket, vacuum motor	2
25	PH627-25	vac hose, 1-1/2", black, wire reinforced	1
26	H300	cuff, black 1-1/2"	1
27	H217	clamp, hose, 2-1/4 DIA	4
28	PH628-10	vac hose, 2", black, wire reinforced	1
29	C301	vac motor, 2 stage, 115V, tangential	2
30	H770	bolt, 1/4-20 x 1/2" serrated hex flange, zinc	9
31	G059	exhaust boot, plastisol	1
32	H221	nut, lock, 1/2" steel	1
33	H220	fitting, strain relief, cord	1
34	E532	power cord, end, 25', 14/3 yellow	1
35	H254	washer, axle, cut 1/2" id	2
36	H224	axle, 1/2" x 17-3/4", fb	1
37	H239	wheel, 8"	2
38	H219	cap, axle, 1/2"	2
39	P757	sol tank, firebird	1
40	H213	washer, 1/4" lock, s/s	4
41	H211	washer, 1/4" id x 1" od, flat, s/s	4
42	G052	washer, buna 1-1/8" od x 3/16" id	4
43	H912	bracket, rear, fb/spy	1
44	H307	washer, star, 1/4" steel zinc	2
45	H922	knob, thumb screw, for bracket	2
46	H378	bracket, front hinge, sp/fb	1
47	H201	bolt, 1/4-20 x 1/2" hex head, zinc	2
48	H204	bolt, 1/4-20 x 1-3/4" hex head, s/s	2
49	B186	elbow, brass, 90 deg, 3/8"mpt x 3/8" fmpt	1
50	H299	washer, 11/16" id x 1-1/2" od x .075, s/s	4

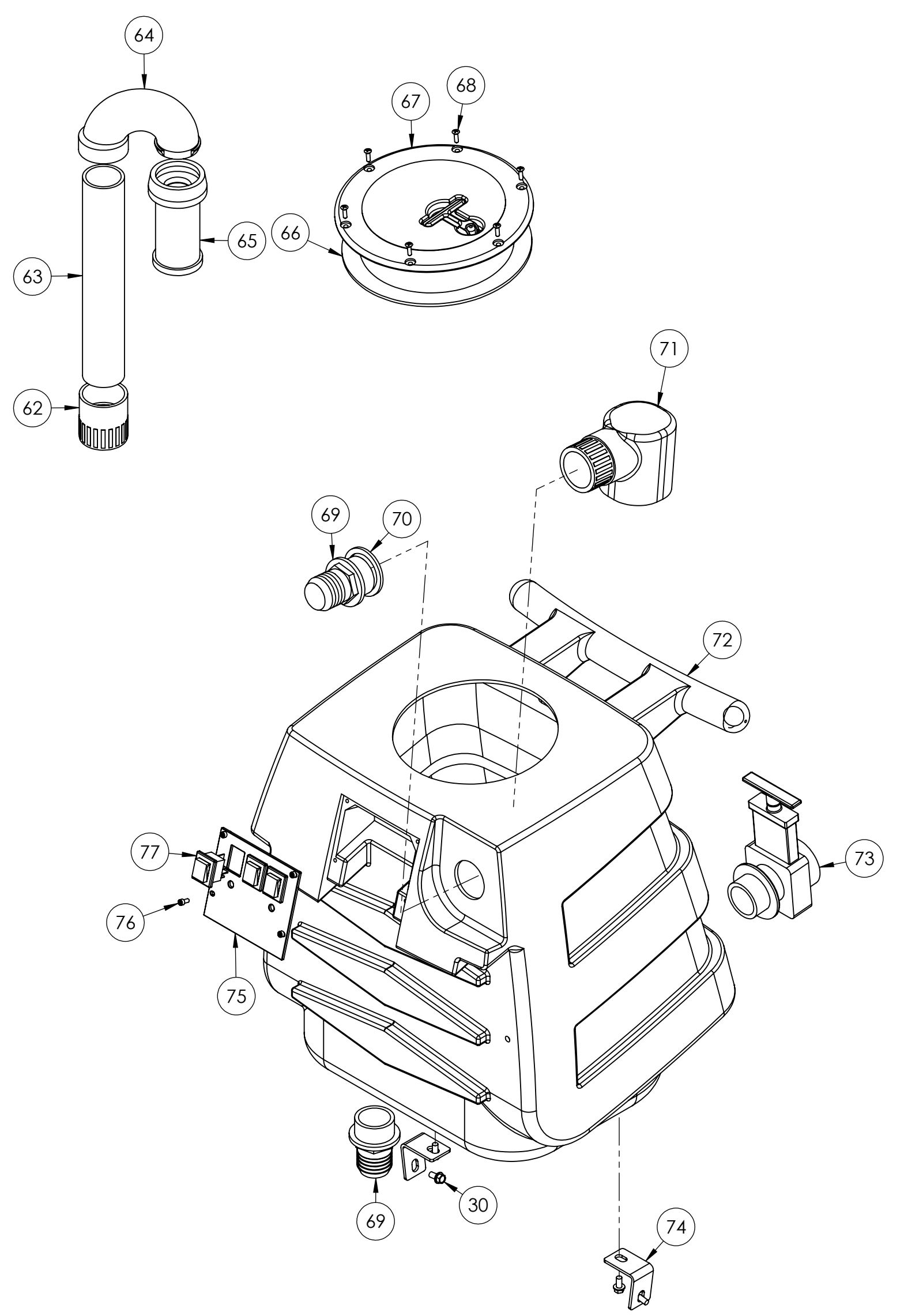
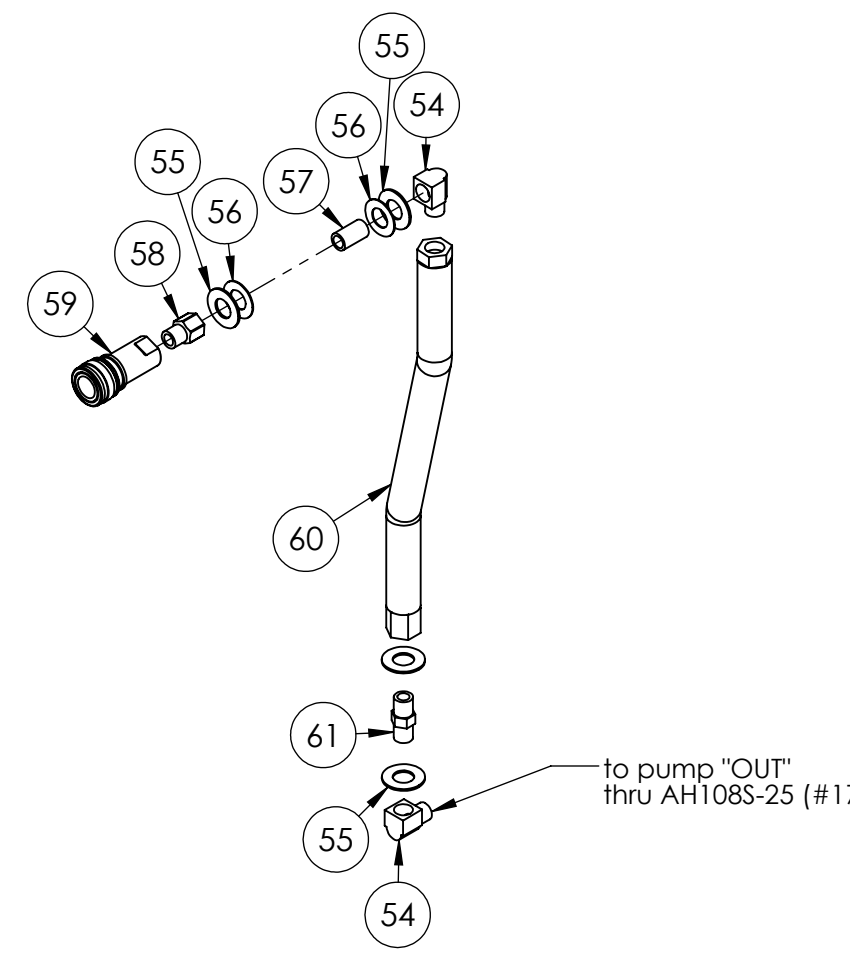
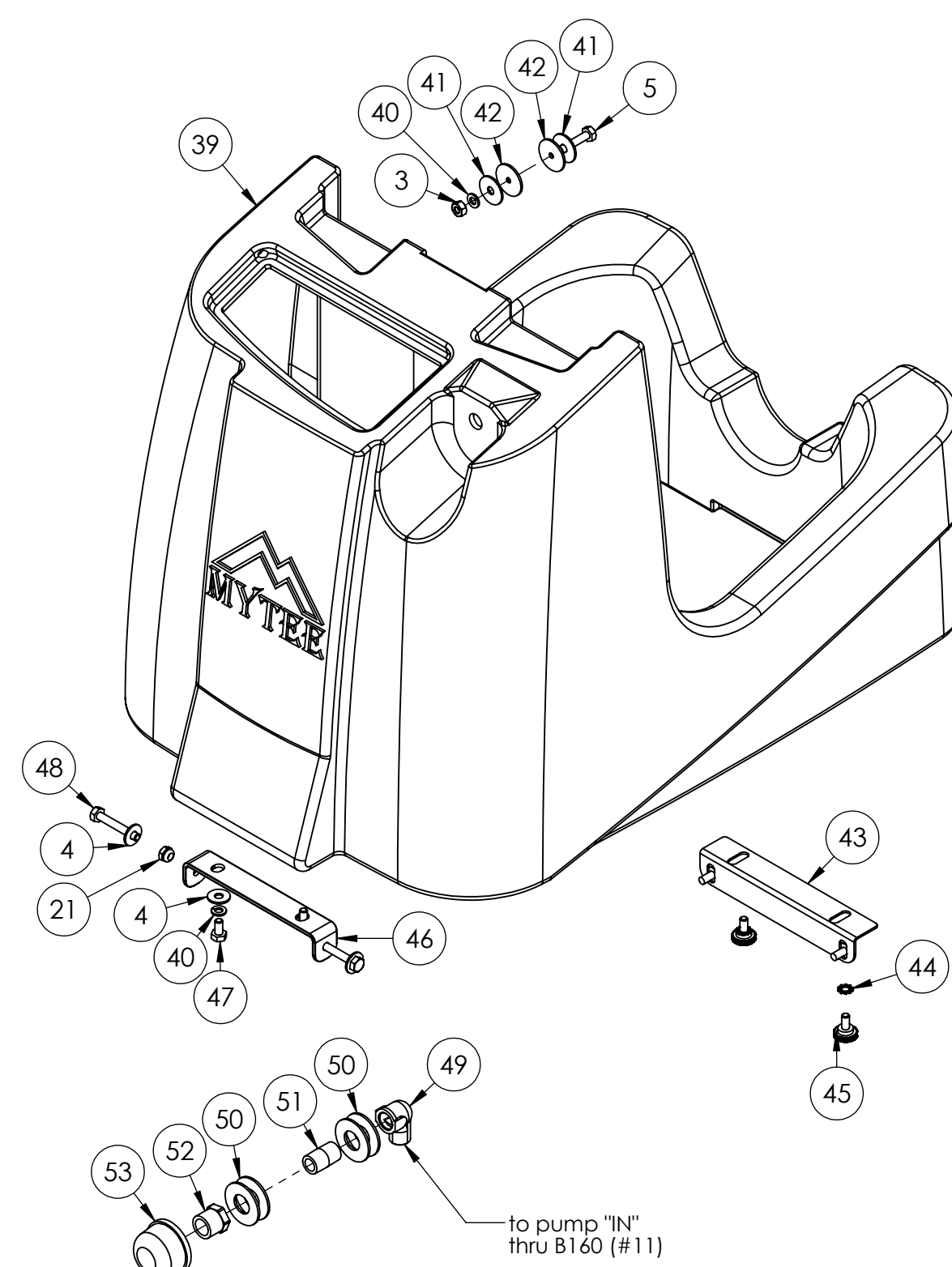
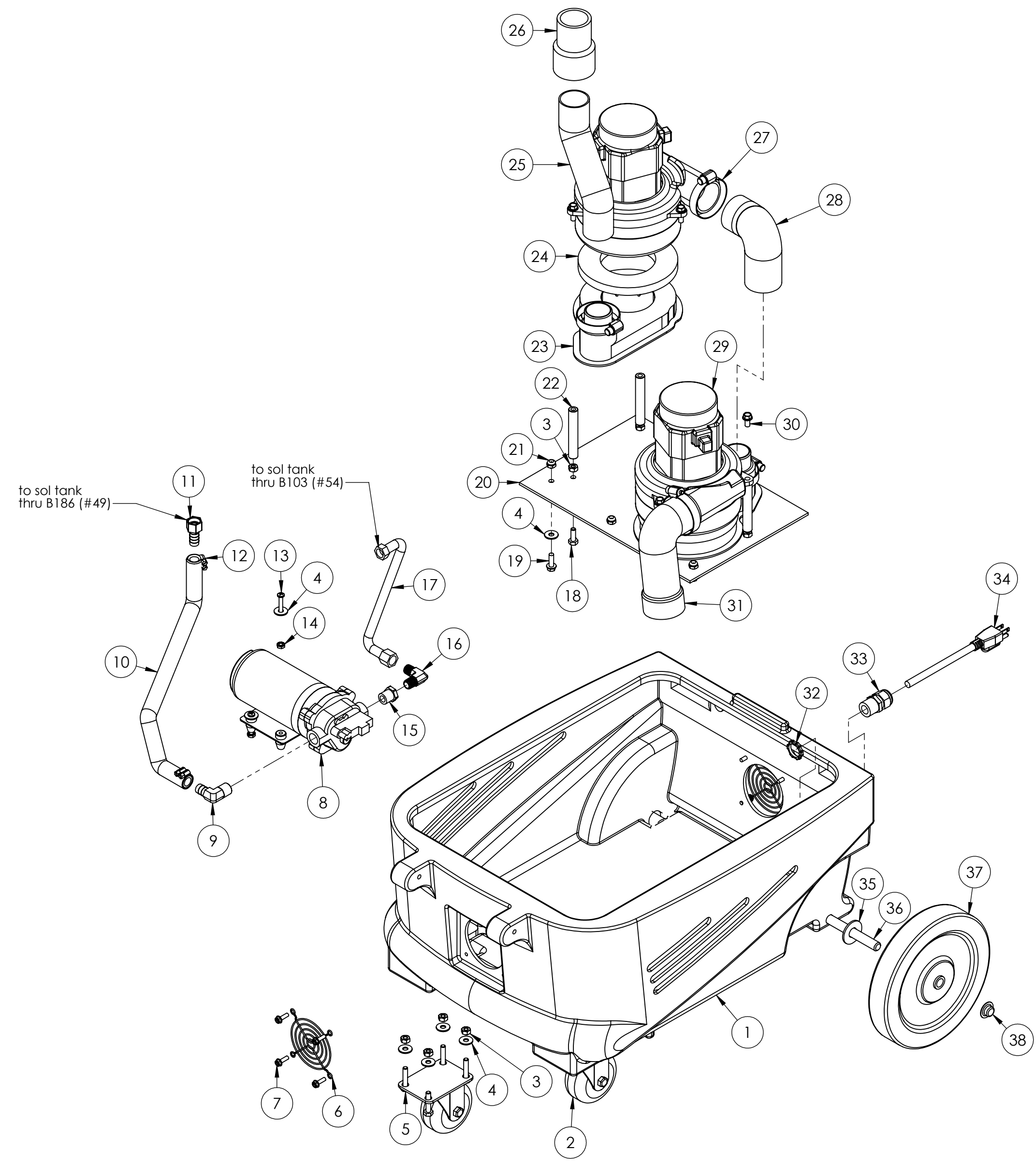
ITEM NO.	PART NO.	DESCRIPTION	QTY.
51	B216	nipple, brass, 3/8" x close	1
52	B210	bushing, brass, 1/2"mpt x 3/8" fpt, hex	1
53	B119A	filter, strainer, 1/2"	1
54	B103	elbow, brass, 90 deg, 1/4"mpt x 1/4" fpt	2
55	H212	washer, 9/16" id x 1" od, flat, s/s	4
56	H413	washer, nylon, 9/16 id x 1-1/16 od x .031	2
57	B106	nipple, brass, 1/4" x close	1
58	B111	adapter, brass, extender, 1/4" mpt x 1/4" fpt, hex	1
59	B102	qd, brass, 1/4" f	1
60	AH105-18	hose, 3/8" x 17-1/2", (OAL)	1
61	B107	nipple, brass, 1/4"m, hex	1
62	H244	adapter, pvc, 1-1/2" fms x fmpt	1
63	PH633-11	pipe, pvc, 1-1/2"	1
64	P755	elbow, U, 180, 1-1/2", float	1
65	H235	float, 1.5", ball style	1
66	G091	gasket, 7", vac lid	1
67	G090	lid, vac tank, black, 7"	1
68	H304	screw, #8 x 5/8 phil oval, s/s	6
69	H229	fitting, inlet, pvc, 1-1/2", gray	2
70	G001	gasket, inlet, 1.80" i.d.	1
71	A925	elbow, inlet assy 1-1/2"	1
72	P758	vac tank, firebird	1
73	H225	valve, drain, 1-1/2"	1
74	H390A	bracket, "L" (all extractors)	2
75	H326	plate, switch, 3 hole, fb	1
76	H246	screw, #8-32 x 3/8" SHCS, alloy	4
77	E515	switch, rocker, 2 position	3

Items Not Shown

Part No.	Description	QTY.
G010	filter, bag, vac tank, drawstring	1
G085	gasket strip, 3/4" x 36" x 1/8"	2
G147	strap, velcro, w/buckle	5



	NAME	DATE	MYTEE PRODUCTS, INC. 858-679-1191	
DRAWN	M. LaBarbera	03/02/10	TITLE: contractors special	
CHECKED			<small>PROPRIETARY AND CONFIDENTIAL</small> <small>THE INFORMATION CONTAINED IN THIS DRAWING IS THE SOLE PROPERTY OF MYTEE PRODUCTS, INC. ANY REPRODUCTION IN PART OR AS A WHOLE WITHOUT THE WRITTEN PERMISSION OF MYTEE PRODUCTS, INC. IS PROHIBITED.</small>	
	SIZE	DWG. NO.	REV	
	C	2000CS	OD	
	SCALE: 1:8	DO NOT SCALE DRAWING	SHEET 1 OF 2	



NAME	DATE	MYTEE PRODUCTS, INC. 888-679-1191
DRAWN M. LaBarbera	03/02/10	
CHECKED		TITLE:
<small>PROPRIETARY AND CONFIDENTIAL THE INFORMATION CONTAINED IN THIS DRAWING IS THE SOLE PROPERTY OF MYTEE PRODUCTS, INC. ANY REPRODUCTION IN PART OR AS A WHOLE WITHOUT THE WRITTEN PERMISSION OF MYTEE PRODUCTS, INC. IS PROHIBITED.</small>		SIZE DWG. NO. D 2000CS
SCALE: 1:5		DO NOT SCALE DRAWING SHEET 2 OF 2